



## Control instruments for quality assurance Ernst Torque Tester

- Convenient device for checking the removal and closing torques of twist closures and screw caps.
- Scale with slave pointer for removal and closing torques.
- Adjustable for bottles and jars  $\varnothing$  18-116 mm
- Dimensions: 300 mm (length) x 170 mm (width) x 115 (height) mm
- Weight: 3.4 kg

### Measuring range

0-340 Ncm / 0-30 in. lbs.

0-50 daNcm / 0-45 in. lbs.

0-16 daNcm / 0-14 in. lbs.

### Closure- $\varnothing$

< 40 mm

> 40 mm

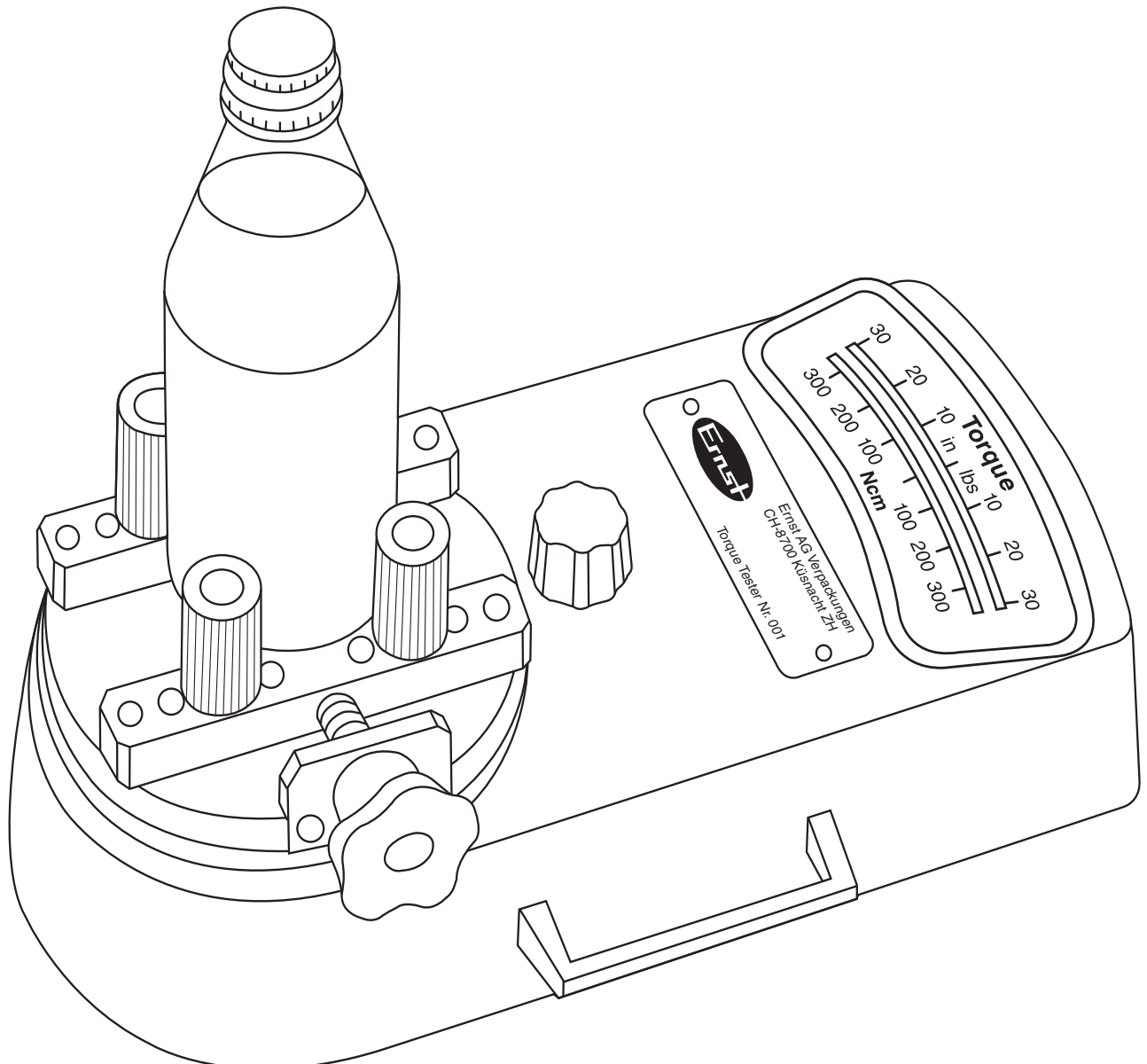
10-25 mm

### Art. Nr.

90

91

96



## Control instruments for quality assurance Ernst Torque Tester

### Description

The rotatable aluminium plate (1) is mounted without play and practically friction-free in maintenance-free ball bearings in a solid cast aluminium housing.

Jars, bottles and other test objects are clamped between the four rubber-covered posts by turning the spindle with the star-knob (2).

The bearings (3) hold the spindle firmly.

A thin oil film protects the movable clamping parts from rust and maintains their function.

### Measuring procedure

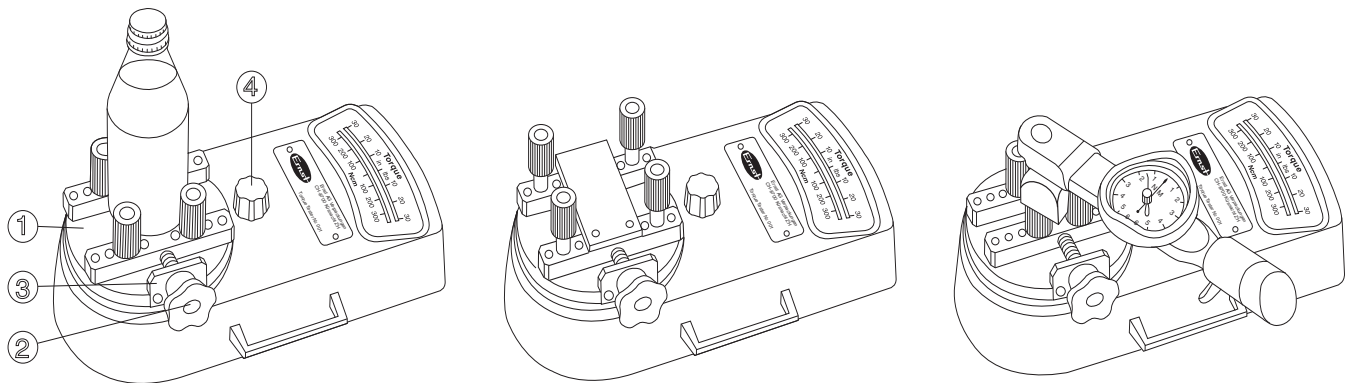
1. After clamping the bottle, set slave pointer to zero by carefully turning knob (4) left and right.
2. Read off removal torques on left hand side of the scale.
3. Read off closing torques on right hand side of the scale.

Scale values according to model, in Ncm/daNcm also in lbs (1 in.lbs = 11.3 Ncm or 1.13 daNcm)

### Care instructions

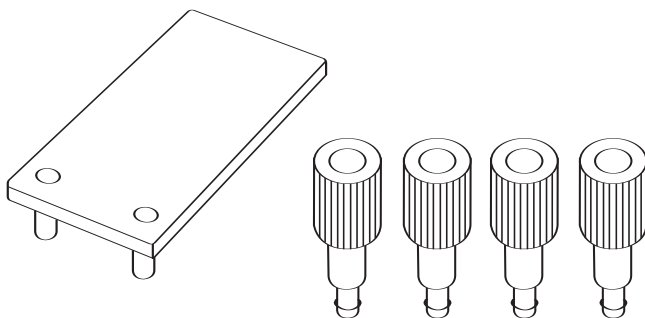
When not in use, keep Ernst Torque Tester clean and dry.

- Dry tester after use if wet.
- Apply low viscosity oil periodically the threaded spindle (2) and its bearings (3) on the clamping plate (1).
- The Ernst Torque Tester should be periodically cleaned and checked by user or by us.



### Special holder for PET bottles Art. Nr. 95

PET-bottles in the current forms (Ø 55-116 mm) require an additional push-in plate with extended clamping posts.

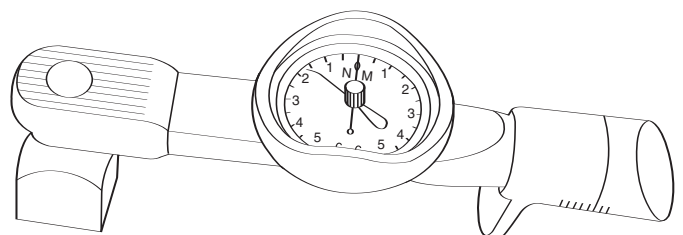


Appropriate clamping elements are available for special shaped plastic bottles and containers and for containers with eccentric closures.

### Torque wrench DMS Art. Nr. 84

The DMS serves for checking the Ernst Torque Tester and is supplied with a works certificate.

The DMS is clamped in the Ernst Torque Tester (like a bottle). Turn the DMS by hand until pointer on the Ernst Torque Tester indicates 100/200/300. Read off deviations on the DMS.



The DMS is to be calibrated by an approved calibration authority if it is used as test equipment for quality assurance according to ISO 9000.